

# RHTEMP1000

## HUMIDITY AND TEMPERATURE DATA LOGGER



### Features

- Software Battery Life Indicator
- 316 Stainless Steel Enclosure
- Small, sleek design
- Fast Response Time
- Engraved Label
- CE compliant

### Benefits

- Faster Downloads  
(1 min. full memory)
- Docking station communication
- Easily identify low battery voltage

### Applications

- Implement HACCP Programs
- Environmental studies
- Hostile environment monitoring
- Medical & Pharmaceutical

The new RHTemp1000 humidity and temperature logger is a rugged, IP30, battery powered, stand alone device which can be used to automatically record humidity and temperature. This all in one compact, portable, easy to use device is able to measure and record up to 16,350 humidity and temperature measurements.

The RHTemp1000 is ideal for use in harsh environments. Its real time clock ensures that all the data is time and date stamped. The storage medium is non-volatile solid state memory, providing maximum data security even if the battery becomes discharged. With the added battery life indicator feature, users can now easily identify low voltage and change batteries before usage. The device can be started and stopped directly from your computer and its small, sleek size allows it to fit almost anywhere. The RHTemp1000 makes data retrieval quick and easy. Simply insert the device into the IFC400 or the IFC406 USB docking station (*sold separately*) and our user-friendly software does the rest. No more removal of end-caps to download your data!

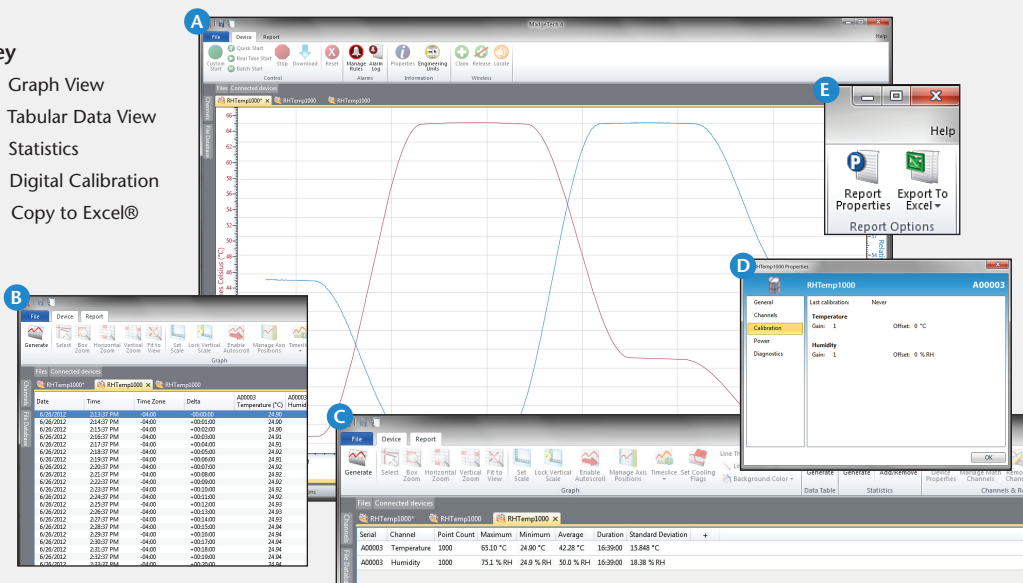


The MadgeTech Software is a powerful, analytic tool, available to download for free from our website [www.madgetech.com](http://www.madgetech.com). Data can be viewed in graphical or tabular formats and summary and statistics views are available for further analysis.

## MADGETECH DATA LOGGER SOFTWARE

### Key

- A** Graph View
- B** Tabular Data View
- C** Statistics
- D** Digital Calibration
- E** Copy to Excel®



### Software Features:

- Multiple graph overlay
- Statistics
- Digital calibration
- Zoom in/ zoom out
- Lethality equations (F0, PU)
- Mean Kinetic Temperature
- Full time zone support
- Data annotation
- Min./Max./Average lines
- Data table view
- Automatic report generation
- Summary view
- Multilingual

# RHTEMP1000 SPECIFICATIONS\*

## Temperature

<b>Temperature Sensor:</b>	Resistance Temperature Detector (RTD)
<b>Temperature Range:</b>	-40 °C to +80 °C (-40 °F to +176 °F)
<b>Temperature Resolution:</b>	0.01 °C
<b>Temperature Response Time in Air:</b>	t <sub>63</sub> - 8 minutes to 63% of change t <sub>90</sub> - 68 minutes to 90% of change
<b>Calibrated Accuracy:</b>	±0.5 °C (0 °C to 55 °C)

## Humidity

<b>Humidity Sensor:</b>	Capacitive Polymer
<b>Humidity Range:</b>	0 %RH to 100 %RH (non-condensing)
<b>Humidity Resolution:</b>	0.1 %RH
<b>Humidity Response Time in Air:</b>	t <sub>63</sub> - 30 seconds to 63% of change t <sub>90</sub> - 2 minutes to 90% of change
<b>Calibrated Accuracy:</b>	±3.0 %RH maximum

## General

<b>Start Modes:</b>	Software programmable immediate start or delay start up to 24 months in advance
<b>Real Time Recording:</b>	May be used with PC to monitor and record data in real time
<b>Memory:</b>	16,350 readings per channel
<b>Password Protection:</b>	Yes
<b>Reading Rate:</b>	1 reading every second up to 1 reading every 24 hours

\*SPECIFICATIONS ARE SUBJECT TO CHANGE WITHOUT NOTICE. SPECIFIC WARRANTY REMEDY LIMITATIONS APPLY. CALL 1-603-456-2011 OR GO TO WWW.MADGETECH.COM FOR DETAILS.

<b>Calibration:</b>	Digital calibration through software
<b>Calibration Date:</b>	Automatically recorded within device
<b>Memory Wrap:</b>	Yes
<b>Data Format:</b>	Date and time stamped °C, °F, K, °R; %RH, mg/mL, Dew Point
<b>Battery Life:</b>	2 years typical at 25 °C (15 minute reading rate)
<b>Battery Type:</b>	3.6V lithium battery included, <b>user replaceable</b>
<b>Time Accuracy:</b>	±1 minute/month at 25 °C
<b>Required Interface Package:</b>	IFC400 or IFC406
<b>Computer Interface:</b>	USB (interface cable required); 125,000 baud
<b>Operating System Compatibility:</b>	Windows XP SP3/Vista/Windows 7/Windows 8
<b>MadgeTech Software Compatibility:</b>	<ul style="list-style-type: none"> <li>Standard Software version 4.1.0.2 or later</li> <li>Secure Software version 4.1.3.0 or later</li> </ul>
<b>Operating Environment:</b>	-40 °C to +80 °C (-40 °F to +176 °F), 0 %RH to 100 %RH (non-condensing)
<b>Dimensions:</b>	1.7 in x 0.97 in x 0.97 in (42 mm x 24.6 mm x 24.6 mm)
<b>Weight:</b>	2.3 oz (65 g)
<b>Material:</b>	316 Stainless Steel/PEEK
<b>IP Rating</b>	IP30
<b>Approvals:</b>	CE

**BATTERY WARNING:** FIRE, EXPLOSION AND SEVERE BURN HAZARD. DO NOT RECHARGE, DISASSEMBLE, HEAT ABOVE 100 °C (212 °F), INCINERATE, CRUSH, OR EXPOSE CONTENTS TO WATER.

## ORDERING INFORMATION

MODEL	DESCRIPTION
RHTEMP1000	Humidity and Temperature Recorder with Stainless Steel enclosure
IFC400	Docking station with USB cable, software, and manual
IFC406	6 Port, Multiplexer docking station with USB cable, software and manual
Calibration Certificate	Calibration Certificate available for data logger
TL-2150/S	Replacement battery for RHTemp1000

**ASK ABOUT OUR OTHER DATA LOGGERS**

- Temperature
- Humidity
- Pressure
- pH Level
- Shock
- LCD Display
- Pulse/Event/State
- Current
- Voltage
- Wireless
- Intrinsically Safe
- Spectral Vibration
- Motion

For Quantity Discounts call 603-456-2011 or email [sales@madgetech.com](mailto:sales@madgetech.com)