

Event101A

Event Data Logger



Choose the Event101A data logger to monitor and record the occurrences of a specific event. With limitless possibilities, this dynamic device can be used for applications ranging from time or traffic studies, or used in conjunction with a rain gauge for rainfall monitoring. The Event101A has up to a 10 year battery life, making it ideal for long term field studies and is a common solution for monitoring gas, water or electric meters.

The Event101A offers an input range of up to 30 V, a reading rate of 4 Hz and a storage capacity of over 800,000 readings with ultra-high speed data download capability. Using the MadgeTech Data Logger Software, the Event101A can be also be configured to utilize the memory wrap option to extend deployment capability or program the device for delayed start up to 18 months in advance.

The terminal block on the Event101A conveniently disconnects from the data logger to retain any wiring connectivity while retrieving the device for data downloads.

Collected data can be downloaded to the software and viewed in graphic, tabular, and summary form. Engineering Units can also be configured to display readings in the desired units automatically. Once downloaded, data can also be exported to Excel® for further custom reporting.

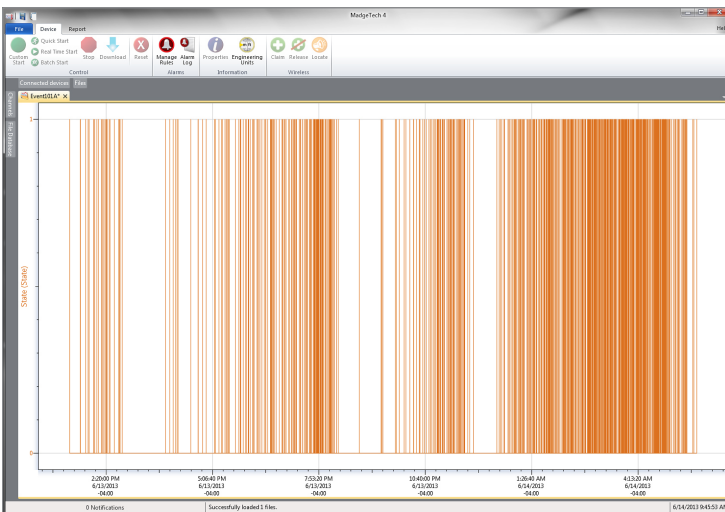
Features

- 10 Year Battery Life
- 4 Hz Reading Rate
- Multiple Start/Stop Function
- Ultra High Speed Download
- 838,041 Events Storage Capacity
- Memory Wrap
- Battery Life Indicator
- Optional Password Protection
- Field Upgradeable

Benefits

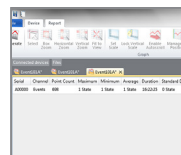
- Simple Setup and Installation
- Minimal Long-Term Maintenance
- Long-Term Field Deployment

MadgeTech 4 Software Features

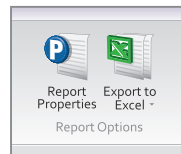


Graph View

- Multiple graph overlay
- Statistics
- Digital calibration
- Zoom in/ zoom out
- Lethality equations (F0, PU)
- Mean Kinetic Temperature
- Full time zone support
- Data annotation
- Min./Max./Average lines
- Summary view



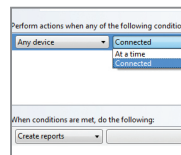
Statistics



Export to Excel

Time	Time Zone	Delta
1:13:37 PM	-0400	-00:00:00
1:14:37 PM	-0400	+00:01:00
1:15:37 PM	-0400	+00:02:00
1:16:37 PM	-0400	+00:03:00
1:17:37 PM	-0400	+00:04:00
1:18:37 PM	-0400	+00:05:00
1:19:37 PM	-0400	+00:06:00
1:20:37 PM	-0400	+00:07:00
1:21:37 PM	-0400	+00:08:00
1:22:37 PM	-0400	+00:09:00
1:23:37 PM	-0400	+00:10:00
1:24:37 PM	-0400	+00:11:00
1:25:37 PM	-0400	+00:12:00
1:26:37 PM	-0400	+00:13:00
1:27:37 PM	-0400	+00:14:00
1:28:37 PM	-0400	+00:15:00

Tabular Data View



Automation

Applications

- Monitoring Gas, Water or Electric Meters
- Rainfall Monitoring
- Contact Closure Monitoring
- Time Studies
- Traffic Studies

SPECIFICATIONS

Specifications are subject to change without notice. Specific warranty remedy limitations apply.

MEASUREMENT	
Input Connection	Removable screw terminal
Input Range	0 V to 30 V
Input Low	< 0.4 V
Input High	> 2.8 V
Internal Weak Pull-Up	< 60 μ A
Input Impedance	> 60 k Ω
Minimum Input Active (Low) Time	10 Microseconds
Engineering Units	Native measurement units can be scaled to display measurement units of another type such as on/off, open/closed or rainfall.

GENERAL	
Start Modes	Immediate start Delay start up to 18 months Multiple pushbutton start/stop
Stop Modes	Manual through software Timed (specific date and time)
Multiple Start/Stop Mode	Start and stop the device multiple times without having to download data or communicate with a PC
Real Time Recording	May be used with PC to monitor and record data in real time
Password Protection	An optional password may be programmed into the device to restrict access to configuration options. Data may be read out without the password.

Memory	838,041 readings; software configurable memory wrap
Wrap Around	Yes
Alarm	User selectable high and low limits; blinking LED for alarm and low battery
LEDs	2 status LEDs
Reading Rate	4 Hz up to 1 reading every 24 hours (Device will record 1 event per reading interval)
Calibration	Digital calibration through software
Calibration Date	Automatically recorded within device
Battery Type	3.6 V lithium battery included; user replaceable
Battery Life	10 years typical, dependent upon frequency and duty cycle
Data Format	State
Time Accuracy	\pm 1 minute/month at 25 °C (77 °F) (Stand alone mode)
Computer Interface	USB (interface cable required); 115,200 baud
Operating System Compatibility	Windows XP SP3 or later
Software Compatibility	Standard Software version 2.04.06 or later Secure Software version 4.1.6.0 or later
Operating Environment	-40 °C to +80 °C (-40 °F to +176 °F) 0 %RH to 95 %RH non-condensing
Dimensions	1.4 in x 2.1 in x 0.6 in (35 mm x 54 mm x 15 mm)
Material	Polycarbonate
Weight	0.9 oz (24 g)
Approvals	CE

BATTERY WARNING: FIRE, EXPLOSION AND SEVERE BURN HAZARD. DO NOT RECHARGE, DISASSEMBLE, HEAT ABOVE 100 °C (212 °F), INCINERATE, CRUSH, OR EXPOSE CONTENTS TO WATER.

Ordering Information

Event101A	PN 900103-00	Event Data Logger
IFC200	PN 900298-00	USB interface cable
LTC-7PN	PN 900352-00	Replacement battery for the Event101A

For Quantity Discounts call 1300 662 720 or email sales@pacificsensortech.com.au



Authorized Distributor in Australia
Pacific Sensor Technologies Pty Ltd
 Unit 4, 3 Neutron Place Rowville, VIC 3178 Australia.
 1300 662 720 | sales@pacificsensortech.com.au
www.pacificsensortech.com.au