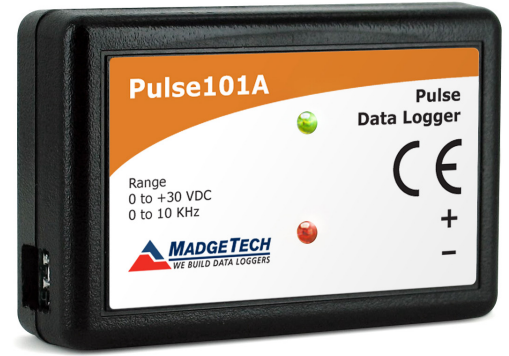


Pulse101A

Pulse Data Logger



The Pulse101A is a compact data logger compatible with many switches, meters and transducers. This multipurpose pulse recording device is designed to accurately monitor and record events occurring within a specified time frame.

The Pulse101A can be used for flow rate, gas and water metering, or can also be used in conjunction with an anemometer to track air speed. This versatile low cost device is compatible with dry contact closures and has many general purpose uses such as frequency monitoring and traffic studies.

The Pulse101A has a maximum pulse rate of 10 KHz to capture rapid events for a wide range of applications. With a ten year battery life and the ability to store over 1,000,000 readings, the Pulse101A can be deployed for long term assignments and configured to start and stop logging as specified by the user.

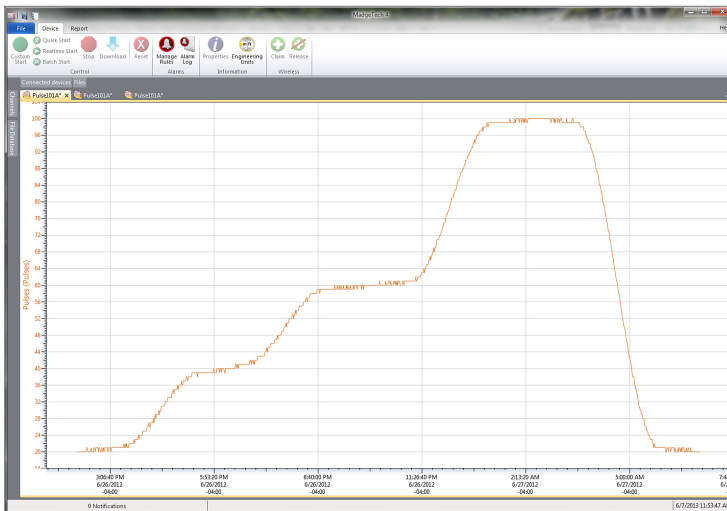
Features

- 10 Year Battery Life
- 1 Second Reading Rate
- Multiple Start/Stop Function
- Ultra High Speed Download
- 1,047,552 Reading Storage Capacity
- Memory Wrap
- Battery Life Indicator
- Optional Password Protection
- Field Upgradeable

Benefits

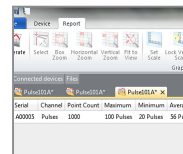
- Simple Setup and Installation
- Minimal Long-Term Maintenance
- Long-Term Field Deployment

MadgeTech 4 Software Features

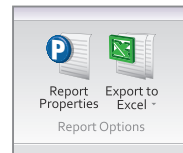


Graph View

- Multiple graph overlay
- Statistics
- Digital calibration
- Zoom in/ zoom out
- Lethality equations (F0, PU)
- Mean Kinetic Temperature
- Full time zone support
- Data annotation
- Min./Max./Average lines
- Summary view



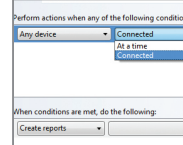
Statistics



Export to Excel

Time	Time Zone	Data
1:33:37 PM	-0400	-05:00:00
1:34:37 PM	-0400	-05:00:00
1:35:37 PM	-0400	-05:00:00
1:36:37 PM	-0400	-05:00:00
1:37:37 PM	-0400	-05:00:00
1:38:37 PM	-0400	-05:00:00
1:39:37 PM	-0400	-05:00:00
1:40:37 PM	-0400	-05:00:00
1:41:37 PM	-0400	-05:00:00
1:42:37 PM	-0400	-05:00:00
1:43:37 PM	-0400	-05:00:00
1:44:37 PM	-0400	-05:00:00
1:45:37 PM	-0400	-05:00:00
1:46:37 PM	-0400	-05:00:00
1:47:37 PM	-0400	-05:00:00
1:48:37 PM	-0400	-05:00:00
1:49:37 PM	-0400	-05:00:00
1:50:37 PM	-0400	-05:00:00
1:51:37 PM	-0400	-05:00:00
1:52:37 PM	-0400	-05:00:00
1:53:37 PM	-0400	-05:00:00
1:54:37 PM	-0400	-05:00:00
1:55:37 PM	-0400	-05:00:00
1:56:37 PM	-0400	-05:00:00
1:57:37 PM	-0400	-05:00:00
1:58:37 PM	-0400	-05:00:00
1:59:37 PM	-0400	-05:00:00
2:00:37 PM	-0400	-05:00:00
2:01:37 PM	-0400	-05:00:00
2:02:37 PM	-0400	-05:00:00
2:03:37 PM	-0400	-05:00:00
2:04:37 PM	-0400	-05:00:00
2:05:37 PM	-0400	-05:00:00
2:06:37 PM	-0400	-05:00:00
2:07:37 PM	-0400	-05:00:00
2:08:37 PM	-0400	-05:00:00
2:09:37 PM	-0400	-05:00:00
2:10:37 PM	-0400	-05:00:00
2:11:37 PM	-0400	-05:00:00
2:12:37 PM	-0400	-05:00:00
2:13:37 PM	-0400	-05:00:00
2:14:37 PM	-0400	-05:00:00
2:15:37 PM	-0400	-05:00:00
2:16:37 PM	-0400	-05:00:00
2:17:37 PM	-0400	-05:00:00
2:18:37 PM	-0400	-05:00:00
2:19:37 PM	-0400	-05:00:00
2:20:37 PM	-0400	-05:00:00
2:21:37 PM	-0400	-05:00:00
2:22:37 PM	-0400	-05:00:00
2:23:37 PM	-0400	-05:00:00
2:24:37 PM	-0400	-05:00:00
2:25:37 PM	-0400	-05:00:00
2:26:37 PM	-0400	-05:00:00
2:27:37 PM	-0400	-05:00:00
2:28:37 PM	-0400	-05:00:00
2:29:37 PM	-0400	-05:00:00
2:30:37 PM	-0400	-05:00:00
2:31:37 PM	-0400	-05:00:00
2:32:37 PM	-0400	-05:00:00
2:33:37 PM	-0400	-05:00:00
2:34:37 PM	-0400	-05:00:00
2:35:37 PM	-0400	-05:00:00
2:36:37 PM	-0400	-05:00:00
2:37:37 PM	-0400	-05:00:00
2:38:37 PM	-0400	-05:00:00
2:39:37 PM	-0400	-05:00:00
2:40:37 PM	-0400	-05:00:00
2:41:37 PM	-0400	-05:00:00
2:42:37 PM	-0400	-05:00:00
2:43:37 PM	-0400	-05:00:00
2:44:37 PM	-0400	-05:00:00
2:45:37 PM	-0400	-05:00:00
2:46:37 PM	-0400	-05:00:00
2:47:37 PM	-0400	-05:00:00
2:48:37 PM	-0400	-05:00:00
2:49:37 PM	-0400	-05:00:00
2:50:37 PM	-0400	-05:00:00
2:51:37 PM	-0400	-05:00:00
2:52:37 PM	-0400	-05:00:00
2:53:37 PM	-0400	-05:00:00
2:54:37 PM	-0400	-05:00:00
2:55:37 PM	-0400	-05:00:00
2:56:37 PM	-0400	-05:00:00
2:57:37 PM	-0400	-05:00:00
2:58:37 PM	-0400	-05:00:00
2:59:37 PM	-0400	-05:00:00
3:00:37 PM	-0400	-05:00:00

Tabular Data View



Automation

Applications

- Compatible with Dry Contact Closures
- Flow Rate Recording
- Gas and Water Metering
- Traffic Studies
- Frequency Recording
- Air Speed Indicators
- General Purpose Pulse Recording

SPECIFICATIONS

Specifications are subject to change without notice. Specific warranty remedy limitations apply.

MEASUREMENT		GENERAL	
Input Connection	Removable screw terminal	Start Modes	Immediate start Delay start up to 18 months Multiple pushbutton start/stop
Maximum Pulse Rate	10 KHz	Stop Modes	Manual through software Timed (specific date and time)
Input Range	0 to 30 VDC continuous	Multiple Start/Stop Mode	Start and stop the device multiple times without having to download data or communicate with a PC
Input Low	< 0.4 V	Real Time Recording	May be used with PC to monitor and record data in real time
Input High	> 2.8 V	Password Protection	An optional password may be programmed into the device to restrict access to configuration options. Data may be read without the password.
Internal Weak Pull-Up	< 60 μ A	Memory	1,047,552 readings; software configurable memory wrap 523,776 readings in multiple start/stop mode
Input Impedance	> 60 k Ω	Wrap Around	Yes
Minimum Pulse Width/ Contact Closure Duration	\geq 10 microseconds	Reading Rate	1 reading every second up to 1 reading every 24 hours
Engineering Units	Native measurement units can be scaled to display measurement units of another type. This is useful when monitoring outputs from different types of sensors such as flow rate, wind speed and more	Alarm	Programmable high and low limits; alarm is activated when recording environment reaches or exceeds set limits
		LEDs	2 status LEDs
		Calibration	Digital calibration through software
		Calibration Date	Automatically recorded within device
		Battery Type	3.6 V lithium battery included; user replaceable
		Battery Life	10 years typical, dependent upon frequency and duty cycle
		Data Format	Date and time stamped uA, mA, A
		Time Accuracy	\pm 1 minute/month at 25 $^{\circ}$ C (77 $^{\circ}$ F) – Stand alone data logging
		Computer Interface	USB (interface cable required); 115,200 baud
		Operating System Compatibility	Windows XP SP3 or later
		Software Compatibility	Standard Software version 2.03.06 or later Secure Software version 4.1.3.0 or later
		Operating Environment	-40 $^{\circ}$ C to +80 $^{\circ}$ C (-40 $^{\circ}$ F to +176 $^{\circ}$ F) 0 %RH to 95 %RH non-condensing
		Dimensions	1.4 in x 2.1 in x 0.6 in (35 mm x 54 mm x 15 mm)
		Weight	0.8 oz (24 g)
		Material	Polycarbonate
		Approvals	CE

BATTERY WARNING: FIRE, EXPLOSION AND SEVERE BURN HAZARD. DO NOT RECHARGE, DISASSEMBLE, HEAT ABOVE 100 $^{\circ}$ C (212 $^{\circ}$ F), INCINERATE, CRUSH, OR EXPOSE CONTENTS TO WATER.

Ordering Information

Pulse101A	PN 901312-00	Pulse Data Logger
IFC200	PN 900298-00	USB interface cable
LTC-7PN	PN 900352-00	Replacement battery for the Pulse101A