

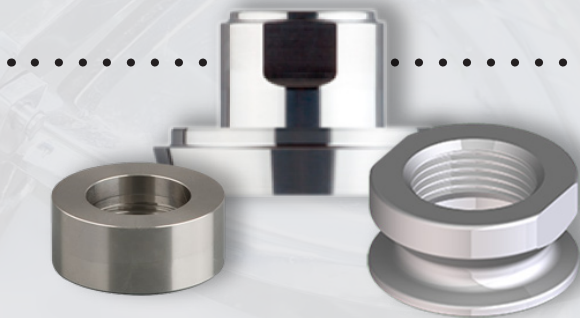
## **MCP-200 Compact sensor** for point level detection in solids

The MCP-200 mini capacitance probe is for point level measurement in light bulk solids. Use it in storage silos, hoppers, mills, or feeders. It ensures against overfilling, alerts to low levels, and prevents dry runs that can damage equipment.



### **Simple Set up** .....

Connect to power using an M12 connector. Download the app and program the sensor using wireless Bluetooth on your phone or use a USB cable connected to a PC. Once connected, an IO-Link sends digital data to a PLC, control room, or HMI.



### ..... **Hygienic connectors**

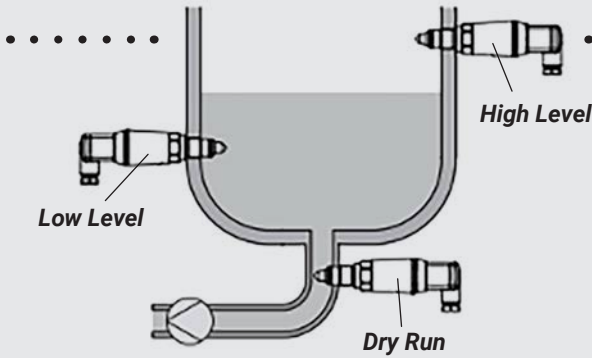
Ideal for food, beverage, or pharmaceutical processors.

- G $\frac{1}{2}$ "
- G1" with o-ring
- G1" with metallic sealing
- Welded socket

### **Continuous supply, no dry runs** .....

The MCP-200 can be mounted to ensure material levels are never too high or too low. Use it as a process control to ensure production runs efficiently and there is adequate supply to prevent unnecessary downtime.

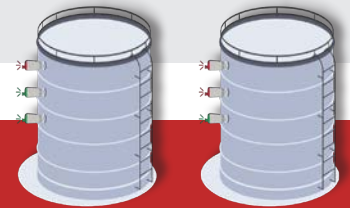
Request a quote today  
1300 662 720



## Form and function

When materials rises and covers the probe, the capacitance changes. It changes again when the probe is uncovered. The electronics relay data that a switch has occurred. It ignores buildup to prevent false alerts.

Customizable LED Status Indicator



Know the status of the vessel when the color changes on the sensor. You can see the bright light from a distance. No need to constantly check each vessel on the plant floor.

## Wireless setup via Bluetooth

Set up the sensor, vessel dimensions, and adjust parameters using a free Bluetooth application. It's a free download from the Apple App Store or Google Play. Or use a Bluetooth USB adapter connected to a PC.



## Level alerts for dry bulk solids

- Dry ingredients, grains, and malts used in food and beverage
- Makers of medications or supplements for pharmaceutical
- Monitoring and dispensing of feed for fisheries or aquaculture



Request a quote today  
1300 662 720

**BINMASTER**  
Sensors & software made simple



Learn more, visit us at

[www.pacificsensortech.com.au/binmaster](http://www.pacificsensortech.com.au/binmaster)